

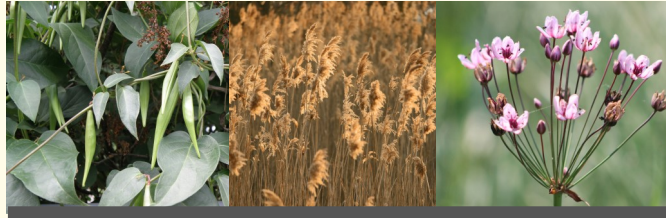
What is an Invasive Species?

- An **invasive species** is an organism that is not native and whose introduction causes harm, or is likely to cause harm to Michigan's economy, environment, wildlife, and human health.
- In Oakland County invasive species **reduce property values, damage infrastructure, create public safety hazards and degrade natural areas.**
- Invasive species cost more than \$120 billion in damages annually in the United States.

On-the-Ground Progress!

- Since 2015, the CISMA has partnered with the Road Commission for Oakland County and local cities, villages and townships to treat Phragmites in road right-of-ways.
- Orion Township catalyzed Phragmites control for private property owners by handling contracts and MDEQ aquatic herbicide permits. Other local governments have followed their example.
- Red swamp crayfish (2017) and European frogbit (2018) were discovered in Oakland County. The CISMA is collaboratively developing plans for survey and control in 2019.
- OC CISMA partners promoted habitat restoration efforts in natural communities to bring back Oakland County's natural heritage.

Pulling Together Against Invasive Species



Contact us today to learn about how you can
Connect with the Oakland County CISMA,
Collaborate with other partners, and
Control your invasive species more effectively.

Contact Us

Oakland County CISMA Coordinator

Erica Clites

eclites@sixriversrlc.org

(248) 660-0716

<https://www.sixriversrlc.org/oakland-county-cisma>

<https://www.facebook.com/occisma/>



A collaboration across Oakland County seeking to support functioning ecosystems and enhance the quality of life through invasive species management

Our Partnership

The **Oakland County Cooperative Invasive Species Management Area (OC CISMA)** is a partnership that helps coordinate and facilitate invasive species management activities of its members within Oakland County.

The OC CISMA was established in December 2014 by 19 partners. Today the partnership consists of 34 members of local governments, county government, non-profit organizations, and universities. For some projects we also partner with state and federal agencies.

We are focused on managing the spread of five State-priority invasive species: invasive **Phragmites**, black and pale **swallow-worts**, **Japanese knotweed**, **European frogbit**, and **flowering rush**. Members also have extensive experience managing other common invasive plants.

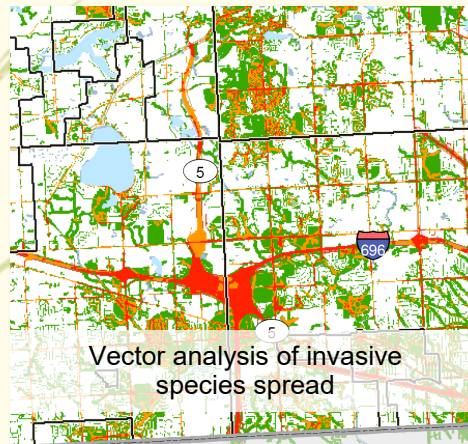
These efforts are concentrated on public and private lands within Oakland County, Michigan and include treatment and control, landowner education and outreach, strategic planning, and regional partnership building.



CISMA

Accomplishments

- **\$220,000** awarded to the CISMA through the 2017 and 2018 Michigan Invasive Species Grant Program to support a full-time Coordinator, and part-time Technician to survey for priority invasive species.
- Treated **95 miles** of invasive Phragmites in road rights-of-way in 2018 under one county-wide contract.
- Disbursed **\$50,000** in Road Commission for Oakland County funding in 2018 to control road right-of-way Phragmites. Cities, villages and townships provided over **\$24,000** in matching funds.
- Developed **Strategic Invasive Species Management Plan** for all of Oakland County
- Connected with over **228,000 people** through media and other outreach efforts in 2018.



Join the CISMA

Members must be governmental units (such as townships, cities, villages, and Oakland County), educational institutions, or non-profit conservation organizations that share a common interest or have expertise in invasive species management. Member organizations must sign the Memorandum of Understanding and designate representatives authorized to cast votes for their organization.

Member Benefits

- Access to expertise in invasive species control, contractor selection, and private landowner support.
- Mapping and strategic planning support
- Surveys and monitoring of emerging invasives.
- Invasive species training.
- Public education and outreach.
- Informational brochures specific to Oakland County.
- Access to ongoing Road Commission for Oakland County funds to treat priority invasive species in rights-of-way.
- Increased communication among partners and outreach to stakeholders.